

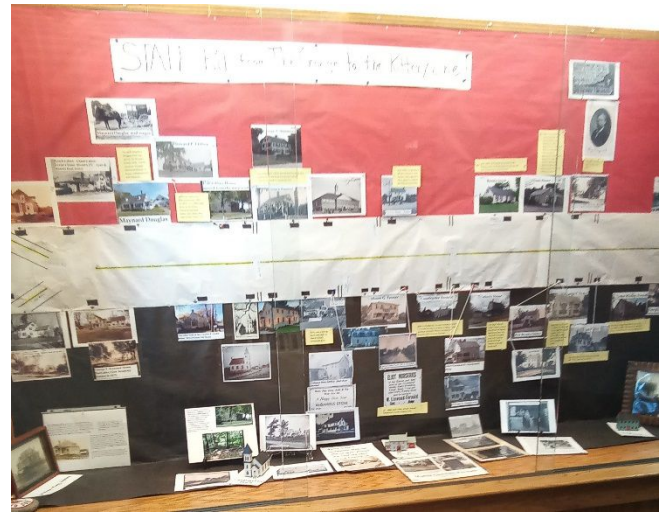
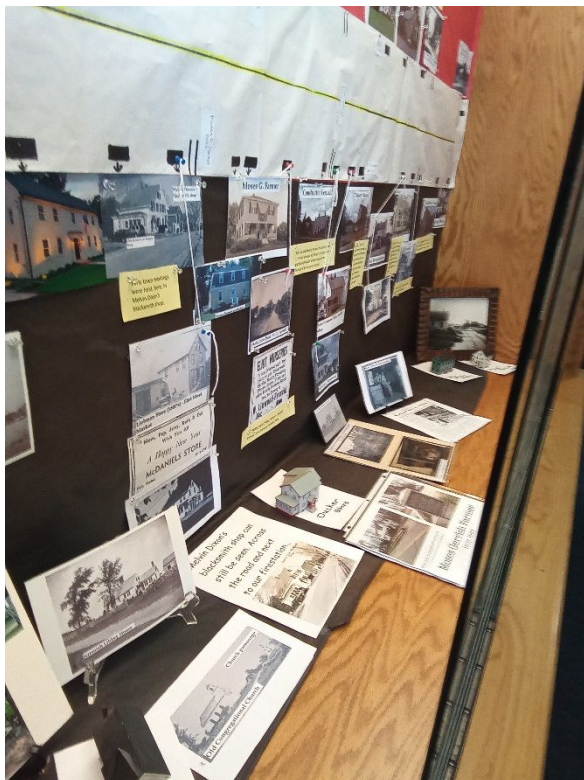
APRIL 4th MEETING PROGRAM:

CEMETERY 101

The life and times of a “Cemetery Man”. This introduction “course” to cemetery work will be led by **Paul Johnson** who will share with us his work and adventures as caretaker of the Mount Pleasant Cemetery in Eliot, as well as his participation in EHS *Adopt a Cemetery Project’s* cleanup of private family cemeteries.

Eliot Elementary School Display

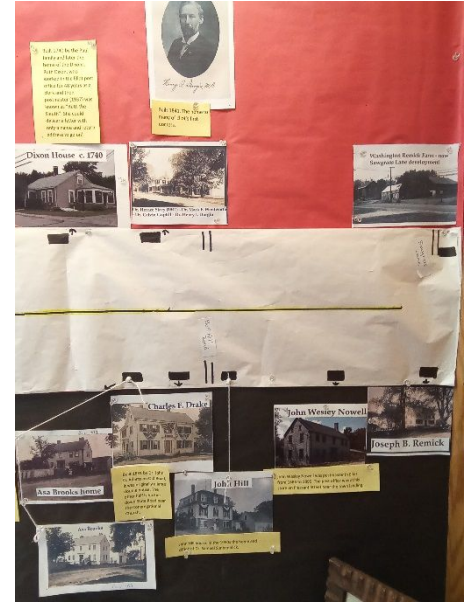
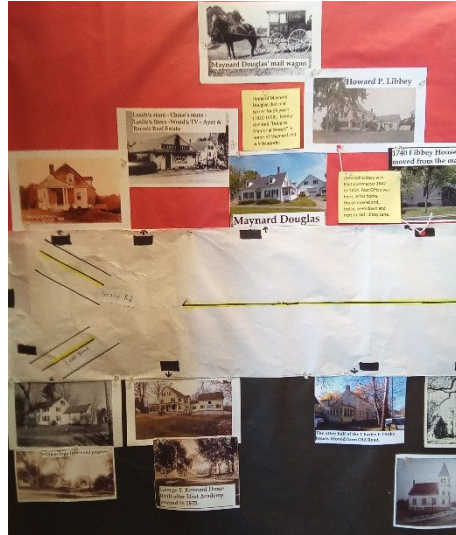
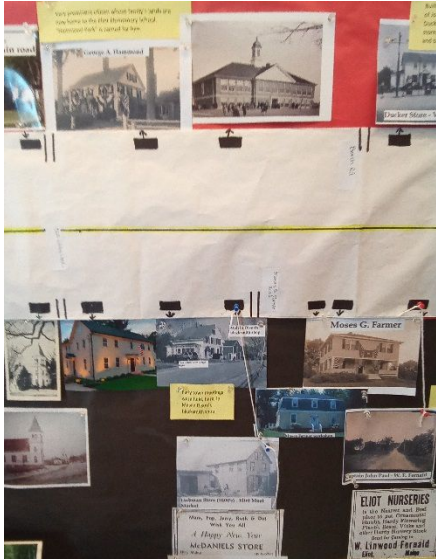
Over the February school vacation **Jan** and **Rosanne** installed a new display. “State Road from the Grange to the Kittery Line”. This “timeline” focuses on the



various houses and other buildings in Eliot, on this road, that have a history to tell. Included in the display are some of the miniature buildings created by the late Charlie Remick, that are in our collection. Jan has already heard feedback from students and staff who are enjoying seeing and learning about some of the buildings that surround them. Many have recognized and several have a connection with some of these.

1

Address: PO BOX 3, Eliot, ME 03903
Website: www.eliothistoricalsociety.org
Phone: 752-0174 (Rosanne)



At our **February meeting** Eliot Elementary teacher **Ann Shapleigh-Shisler** talked with us about the student and school involvement with *Wreaths Across America*, which lead to the hosting last December of their caravan as it passed through Maine and on to Arlington National Cemetery. She shared with us a number of videos and pictures, making for a very interesting and informative program



Tracey Graffam-Dickson sent us this picture of the dredging going on Mast Cove. The Army Corps of Engineers (ACE) is widening the uppermost turning basin of the river from 800 feet to 1200 feet to allow for the large freight vessels coming into Portsmouth. This \$19.8 million project, to expand the Portsmouth Harbor shipping channel, is being funded by the monies from infrastructure law (\$1.6 million) and the \$18.2 million that the ACE incorporated into their 2021 budget.



Back a few months ago **Eric Christian** found a reference, on line, to a house being sold that was “moved from Eliot to Kennebunk” back in 1978. As many know, the moving of houses was quite a regular occurrence here in Eliot - Orland McPherson’s house being moved from out by Bradstreet Lane, the Culver house being moved up from the river, the Hanson house at the end of Indian River Drive moved up from the old Raitt brickyard, the Sherman Emery house on Goodwin Road moved from Punkintown; the “Tate” house being moved from Rosemary, the #7 schoolhouse, on Pleasant Street, being moved across the road, the old Quaker Meeting house being moved across the river from Dover, NH and reports of many others.

Delving a little further Eric found a newspaper clipping and we were able, through the online deeds and Kennebunk Assessor database to find an address to write to concerning the property. The son of the present owner responded and we then talked on the phone. He shared with us a binder with information about the house. Long story, short, we found that the house was actually moved from Berwick, not Eliot. Rosanne will be meeting with the woman who actually had the house relocated later this month to share the album that she put together many years ago and perhaps arrange, with the present owner, a visit to see this fascinating house in Kennebunk.



Our #8 One-room Schoolhouse Museum will be opening sooner than we think!

We are looking for youth and adults who might like to help us host visitors this summer/fall. If yourself or someone you know might like to help please let Jan or Rosanne know. This would be great for those High School students who are in need of "Community Service credits".

The building will be open to the public on the 1st and 3rd Saturdays of the month from 10-2. Opening day has yet to be decided.

ADOPT A CEMETERY

Spring has arrived and soon we'll be back out cleaning up cemeteries!

We are compiling a list of "needy" private family cemeteries.

If you have one you would like to see cleaned up OR better yet, would like to head up a group of friends to clean it, let us know and we will help! - Jan & Rosanne

Looking for Volunteers



ELIOT HISTORICAL SOCIETY IS LOOKING FOR HELP THIS COMING SPRING TO FALL

- PRIVATE CEMETERY CLEANUP
- HELPING HOST VISITS TO THE #8 ONE ROOM SCHOOL HOUSE MUSEUM

High School students - earn your "Community Service" credits!

Interested in joining us?

Send us a message - info@eliothistoricalsociety.org or through our FB page

AREA NEWS AND EVENTS

Eliot Elementary School was recently recognized by the Maine Principals Association for its participation with *Wreaths Across America's* December convoy. To view a video about the event, go to <http://youtu.be/iiVx8G7qSpE>

Marshwood Middle School teachers Cathy Locke and Kris Bisson were recently recognized by the Maine Principals Association for leading the work of staff, students and the school community with the Veteran's Day Celebration. For the complete story see <https://mpaprof.org/maines-positive-story-of-the-day-from-camden-rockport-middle-school-in-camden/>

Are you just “itching” to get out in the garden?? Make your plans now, for the growing season and check out the **Seed Lending Library** at the **William Fogg Library!** Sponsored by the **Eliot Garden Club**, they have a collection of heirloom and open-pollinated seeds for community members to “borrow”, plant, and for the more adventurous, harvest seeds to return to the library. They have vegetable flower and herb seeds. For a complete list and more information visit their website <https://williamfogglibrary.org/>



March 10 - A First Look at the Preble Site with Tad

Baker 6:30pm. Webinar presentation (virtual). **Old York Historical Society**

Archaeological excavations took place last fall and this winter on the historic Preble homestead in York Village. Project volunteer **Tad Baker** presents his historical research on the property, as well as some initial information on the archaeological discoveries, which includes the remains of several early Preble homes, and the fortified walls that protected them in 1692. To obtain “tickets” visit <https://www.simpletix.com/e/webinar-a-first-look-at-the-preble-site-wi-tickets-101154>

MARCH 13 - St. Patrick’s Day Parade, 12pm
Portland, Maine. The parade will travel down Commercial Street from the Portland Fish Pier to the Franklin Arterial.



MARCH 22 Colonial Tavern Dinner at the Red Barn at Outlook Farm on Rt. 4 in South Berwick. Old Berwick Historical Society’s 3rd Annual dinner, featuring the “food, comfort, and entertainment of an inn and tavern ca. 1780”. Cash bar cocktail hour at 5pm and dinner at 6pm. (Please note the different time for this year) Tickets must be purchased by March 16, 2022 at www.olderberwick.org. Cost: \$65 for members, \$75 for non-members. Questions? Contact Cari Quater at 207-384-0000 or director@olderberwick.org.



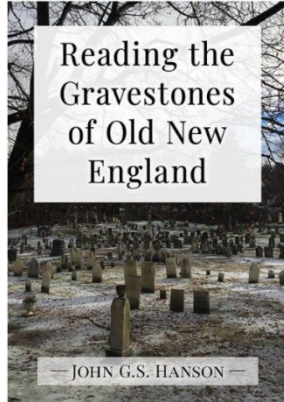
Tuesday and Wednesday -
9:30 am to 7:30 pm
Thursday - 2:30pm to 7:30pm
Friday - 9:30am to 5pm
Saturday - 9:30am to 3pm
**All sales by donation.
Cash and checks only.**

MARCH 22 to 26 - BOOK SALE at Berwick Public Library. 103 Old Pine Hill Rd N. 207-698-5737



MARCH 24 Webinar: The Rise and Fall of Tide Mills in York: Exploring Colonial-Era Technology and the Future of Renewable Energy. 6:30PM

Via ZOOM. FREE (registration required) / \$10 soup supper (optional) <https://oldyork.org/upcoming-events/>



March 31 - Reading

the Gravestones of Old New England with John G.S. Hanson at 7:00 p.m. via Zoom. Join John G.S. Hanson on a stroll through some of the epitaphs and iconography of New England's graveyards. Sherman, CT Library program. Registration is free. Go to <https://www.shermanlibrary.org/calendar-program-list/mdiq7ei05gggnagaup95waha4opn01-p9d8z-zcj4x-8web7-skr8h-jbp29-42lhz-bj356>

APRIL 9 - EASTER EGG TREASURE HUNT at Sandy Hill Farm, River Road. Tickets are on sale now! Looking for volunteers. <https://www.sandyhillmaine.com/egg-treasure-hunt>



APRIL 9th Great Works Regional Land Trust's -The Big Night: Vernal Pool Walk, Rocky Hills Preserve Punkintown Rd, S. Berwick. 6:30-8:30PM Hike limited to 30 ppl. Sign up at <https://www.meetup.com/Seacoast-Nature-Connection>.

STURGEON CREEK FARM, State Road, has started up their "Pop Up Store" events again. Offering fresh eggs, produce, baked goods and handmade tote bags (made from their grain bags). Go to their website or Facebook page to keep informed of their events. <http://www.sturgeoncreekfarm.com/>



BACK FIELDS FARM, Odiorne Lane, is in the midst of their maple sugaring operation. You can order syrup from their website. They also do local pickup. <https://www.backfieldsfarm.org/>



SANDY HILL FARM, River Road, has opened their farm stand. 8am-8pm daily. Self-service. They accept cash, check, and Venmo. Eggs, maple syrup. (Sometimes they have cider donuts and dehydrated apple slices). Keep checking their site or Facebook page for updates as items become available. <http://Sandyhillmaine.com/>

Volunteer Opportunity!

Eliot Connects is a mutual aid non-profit - “we strive to support all citizens of Eliot by creating opportunities to come together, with neighbors helping neighbors, and also to serve as a connection for information on a variety of services, assistance programs and events”. Their most recent activity was the gathering of materials and distribution of 178 “Care Kits” during the winter holidays. Another is planned for the spring. They are looking for volunteers. For more information or if you, or someone you know needs assistance, contact them at <http://eliotconnects.org/> or visit their Facebook page.



“ You have two hands...
One to help yourself,
the second to help others.”

Notes on Eliot Maine History

Random investigations into the history of Eliot, Maine and the Piscataqua River region.

Editor Note Eric R. Christian, who describes himself as “software engineer by day, amateur local historian by night” has started a series of **BLOGS** which is sharing with the community via the Historical Society’s website. Hope you enjoy them as much as we do! You can also find them at <https://eliothistory.blogspot.com/>.

Sunday February 13, 2022

Sunset Hill Gravel 1911

A walk through the woods on the northern side of Sunset Hill reveals the remains of a stone cellar. A building of some kind that was abandoned long ago. It sits in a cut of land that rises steeply to Sunset Hill on the south. Today tree growth partially obscures the fact that this was once a productive gravel pit abandoned one hundred years ago.

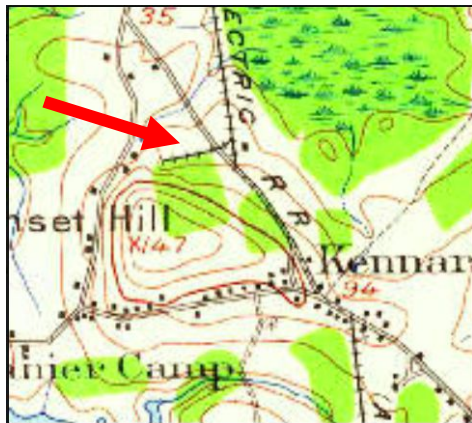


Remains of stone foundation

What was this gravel pit and why was it here? The short answer is this gravel pit was owned by William Augustus Shapleigh (1859-1932) who owned the large old home that his father Samuel built which is now 196 Fore Road. In October 1911 construction began on a branch of the Atlantic Shore Line Railway to bring rail cars to the gravel pit. This branch line can be seen on the 1916 USGS map.

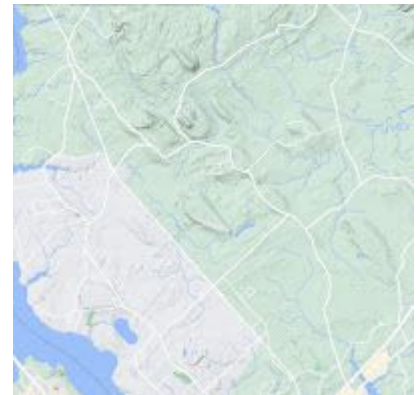


Sunset Hill Gravel Pit circa 1916

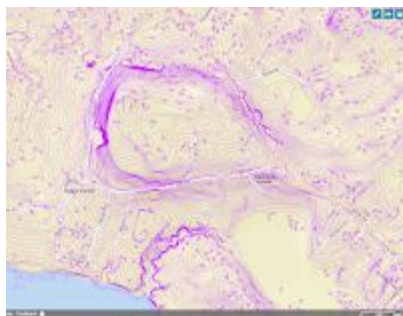


Eliot has not had a shortage of gravel operations, both in the past and continuing today. The reason for this is the location of many glacial outwash features that make up Eliot's landscape. Eliot features many glacial drumlins that are basically the result of receding glaciers dumping

the enormous amount of rocky debris that had accumulated in the ice at certain spots on the surface of the land as they melted and receded north 16,000 years ago.



Eliot Drumlins in terrain view



Contour map of Sunset Hill

Many of these drumlins have been further eroded by the ocean waters that poured in while the bedrock was still compressed from the weight of the glaciers. The drumlins are the various hills that we see around Eliot. They are mostly elongated, often teardrop-shaped and point in the direction of the glacier's retreat. The drumlins contain much of the gravel material sought for construction projects. Sunset Hill was one of these.

In September 1912 a railcar loaded with gravel from the Sunset Hill gravel pit derailed causing disruption to normal rail transportation between Eliot and Dover, NH for several hours. Rail worker Perley Dame of South Eliot was injured in the accident.





By 1919 the gravel pit was deeded to William's son Henry who seems to have used it to secure mortgages that were eventually settled in 1930 by signing the land over to the York County Trust Company.



The land today is mostly overgrown. Most people, unless they live near the site, have probably never heard of it or have seen the remains of the gravel operation. It is one of the historical treasures that are fun to come across while taking a leisurely walk through the woods. A reminder of a time long ago.

In 1940 all of this land was acquired by Edward and Minnie Gleason who in turn deeded it to Melvin and Alice Stadig in 1942. The Stadig's owned it until 1977 when they sold it to Robert Levesque Sr. who then deeded it to the Roman Catholic Bishop of Portland, who held it until selling to the present owners in 1996.

