

# A Historical View of the Bay Lands

1623 to Today

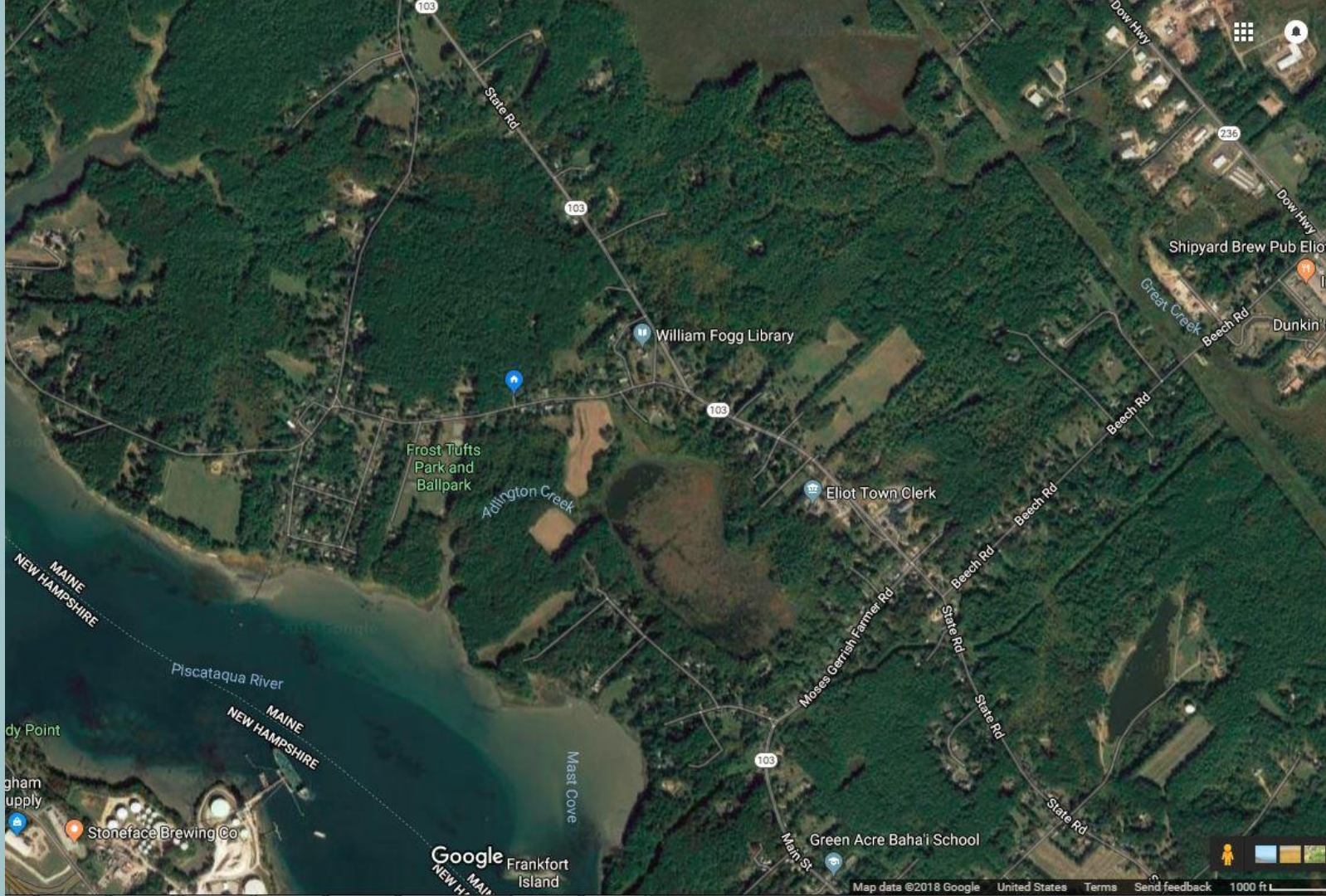


A PORTION OF THE BAY LAND.









# Early Grants and Settlement

## Sir Ferdinando Gorges

- 1622 land patent for Maine with Captain John Mason between Merrimack and Kennebec
- Plymouth Council for New England
- 1629 divided South of Piscataqua became Province of New Hampshire under Mason
- Died 1647, never came to New World



# Early Grants and Settlement

## Captain John Mason

- Founder of New Hampshire
- Grants seemed to give him shared control of some lands East of Piscataqua in present-day Eliot
- Walter Neal appointed his agent
- Died 1635, never came to New World





# Early Grants and Settlement

Was Eliot “Settled” in 1623?

William Hilton

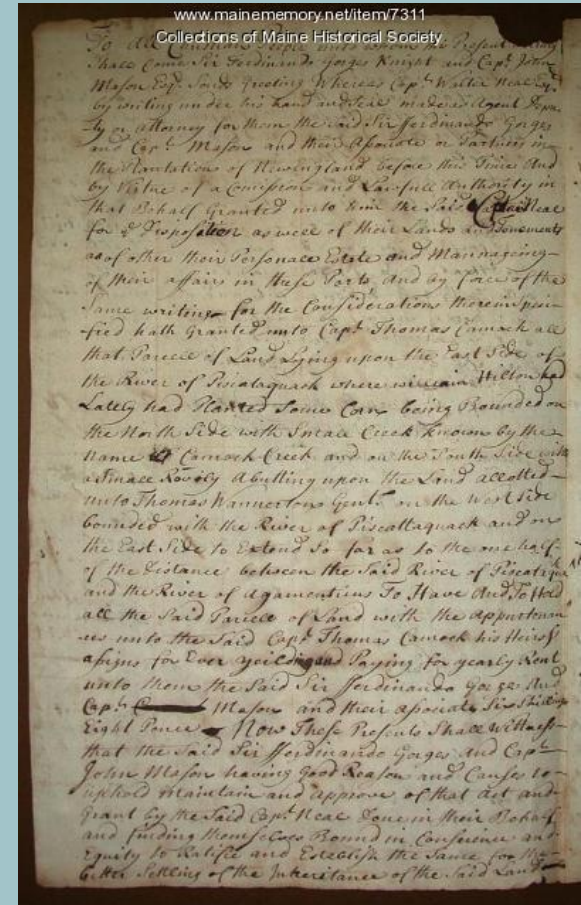
- Brother of Edward Hilton
- Came to Hilton Point (Dover) with his brother in 1623?
- Hilton settled Dover Point 1628?
- Some accounts say he chose to build across the river at Sandy Hill in Eliot where he used an old indian corn field to grow corn and had a house.
- Walter Neal drove him off and burned down his house in 1632
- Sued and won 20 years later



# Early Grants and Settlement

## “Laconia” Company Grants

- Captain Thomas Cammock receives grant in 1633 where William Hilton had his corn field and cabin. Sold this to Alexander Shapleigh's agent Treworgy for his son Nicholas Shapleigh in 1636.
- 





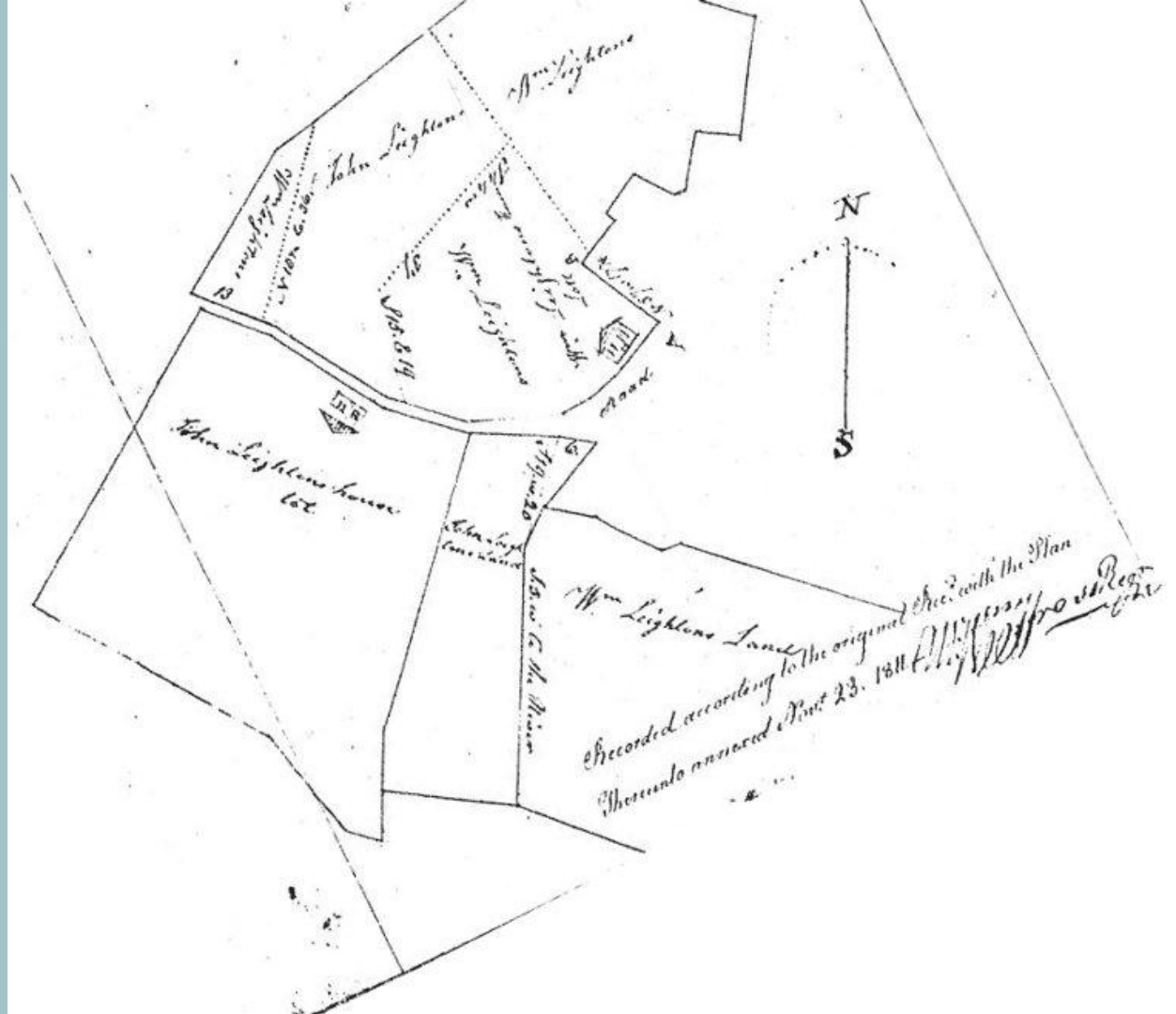
# Early Grants and Settlement

## “Laconia” Company Grants

- Thomas Wannerton receives grant just south of Cammock's in 1633
- Wannerton invited Nicholas Frost to come and be his neighbor and gave him land in 1634
- This Frost land and house became home of William Everett and eventually William Leighton.
- Wannerton sold off more of his grant to Nicholas Shapleigh.



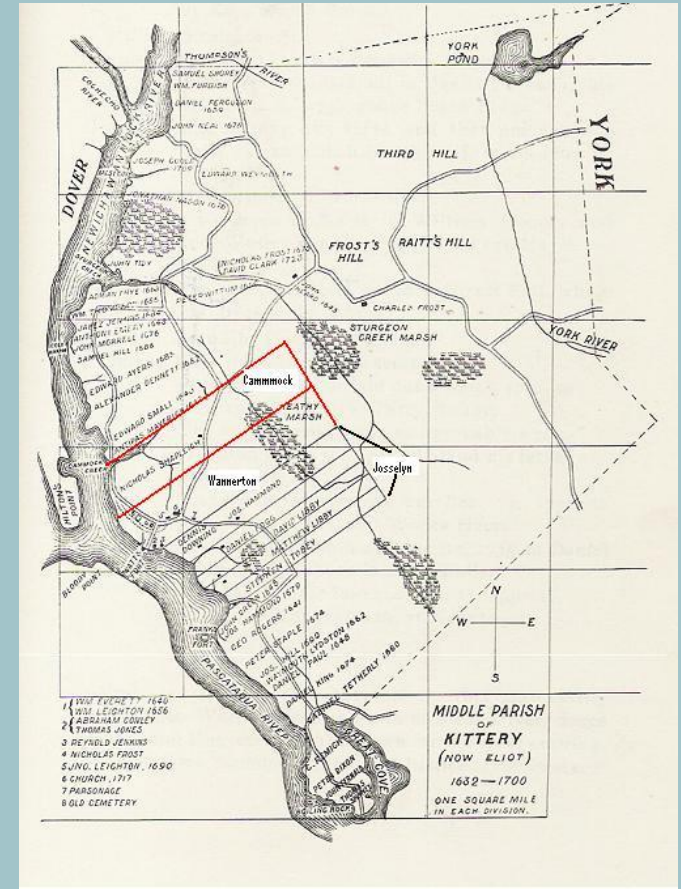
## On original Wannerton grant



# Early Grants and Settlement

## “Laconia” Company Grants

- Henry Joselyn received a grant next to Wannerton's also in 1633
- Extended from Watts Fort to Franks Fort
- Joselyn's grant became the Bay Lands
- Sold this grant about 1639 to the Rev. Hanserd Knollys of Dover.







# Watts Fort

Named for John Watts

- Also Darby, Jocelyn, Leighton
- Darby? Darby Field?
- John Watts, merchant kept a trading post here.



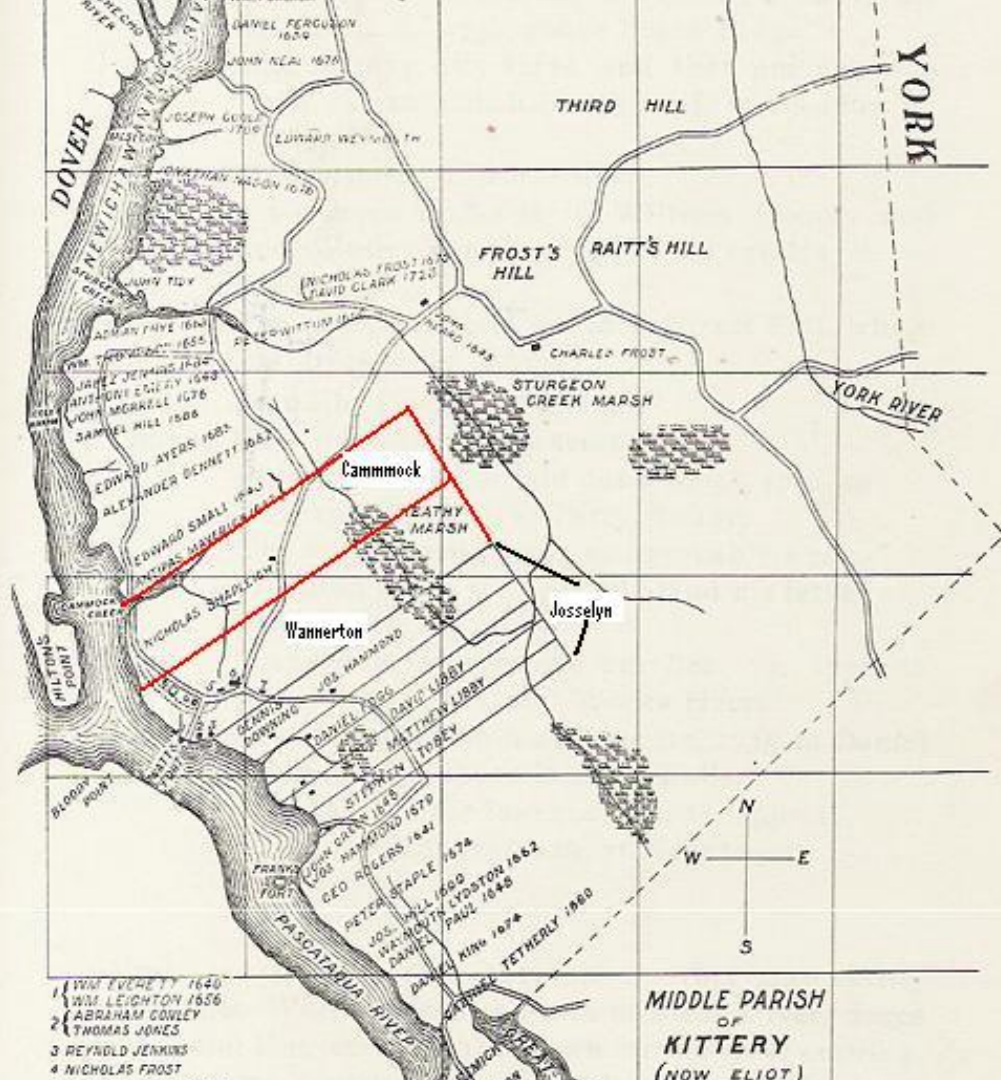
# Franks Fort

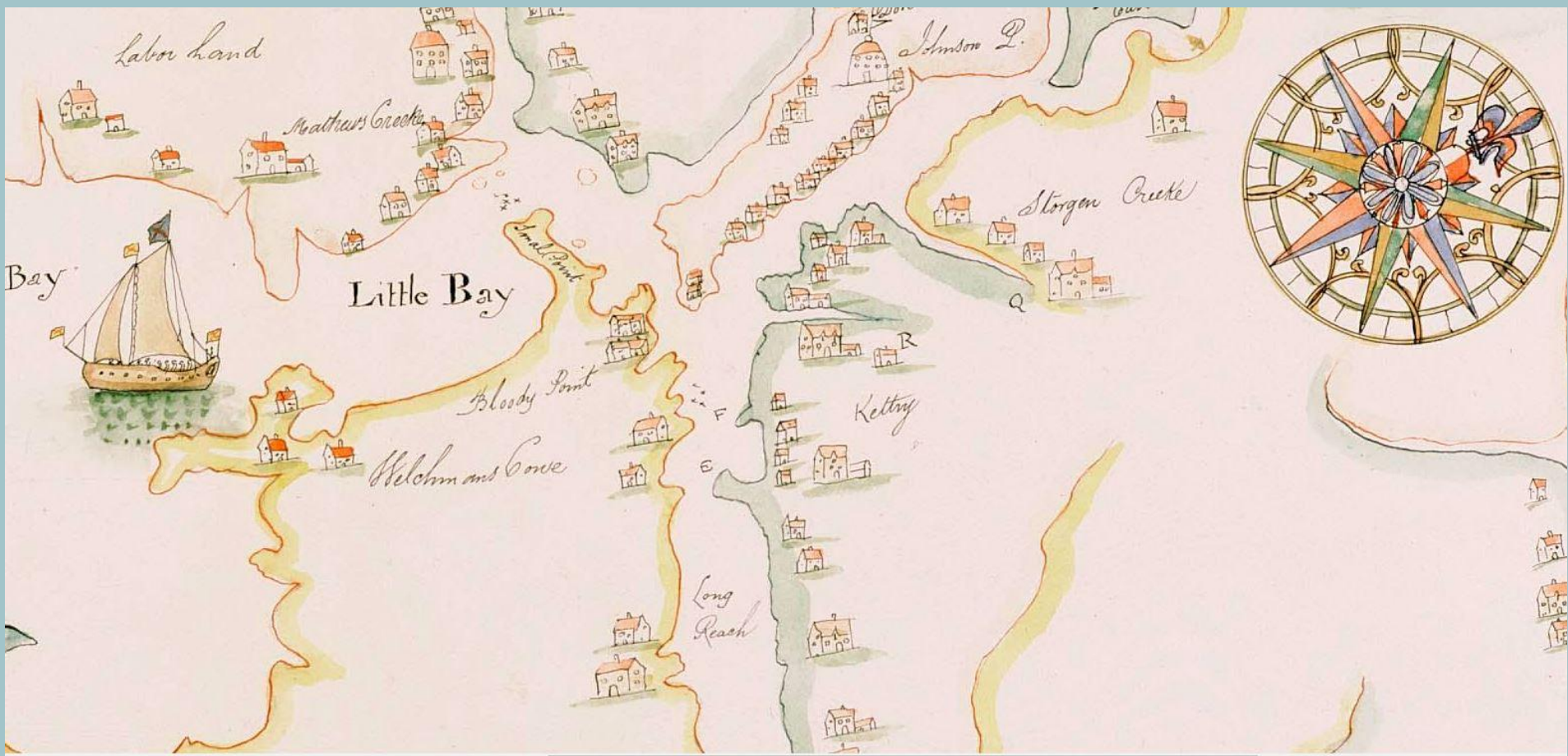
Named for Francis Williams

- Overseer of experimental salt works for Laconia Company located along the shore between Franks Fort and Watts Fort.
- June 1631.
- Salt works were a failed venture.





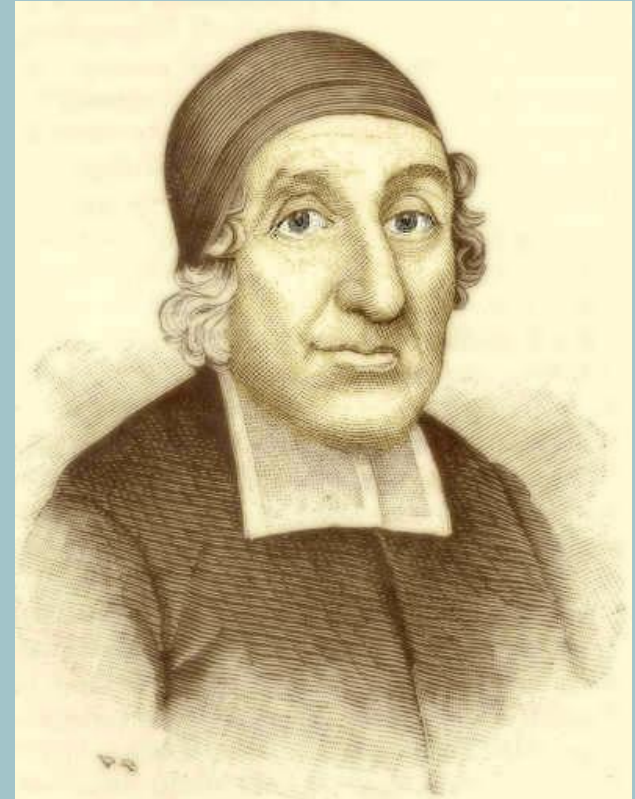




# Knowles Purchase

## Reverend Hanserd Knollys (Knowles)

- Born 1598 ordained by Anglicans 1629.
- Resigned from Anglican Church 1636 and escaped to America in 1638.
- Became Baptist Preacher in Dover. Caught up in “Antinomian Controversy”.
- Probably purchased Joselyn’s grant about 1639.
- Returned to England 1641 but sold his lands to the General Court of Massachusetts for 30 pounds.
- Not an Indian





# William Hawthorne Grant

## William Hawthorne

- Born 1606. Became successful merchant in Salem, MA. Ancestor of Nathaniel Hawthorne.
- Received the Knowles Purchase as a grant from the General Court of Massachusetts on Oct. 14, 1651.
- Part of the first delegation sent to Kittery to convince inhabitants to submit to Massachusetts in 1652.
- Sold Bay Lands to Capt. John Leverett of Boston Dec. 20, 1653 for 8 hogshead of salt and 10,000 feet of boards.



# Leverett to Broughton to Clark

Land used as currency among Boston merchants

- John Leverett sold the Bay Lands to Thomas Broughton in 1655 for “80 pounds sterling in boards.” (Book 1 Folio 98)
- Thomas Broughton sold it to Major Thomas Clark of Boston July 4, 1659.
- Thomas Clark dies in 1683 and his daughters, Mehitable Warren, Elizabeth Hutchinson took ownership of the Bay Lands for the next 16 years.



# Survey of 1682

Peter Coffin requested survey in 1682

- John Evans conducted in presence of Kittery Selectmen, Capt. John Wincoll, Capt. Charles Frost, Lt. Joseph Hammond.
- Parcel measured at 870 acres.
- 240 rods wide by 580 rods long.

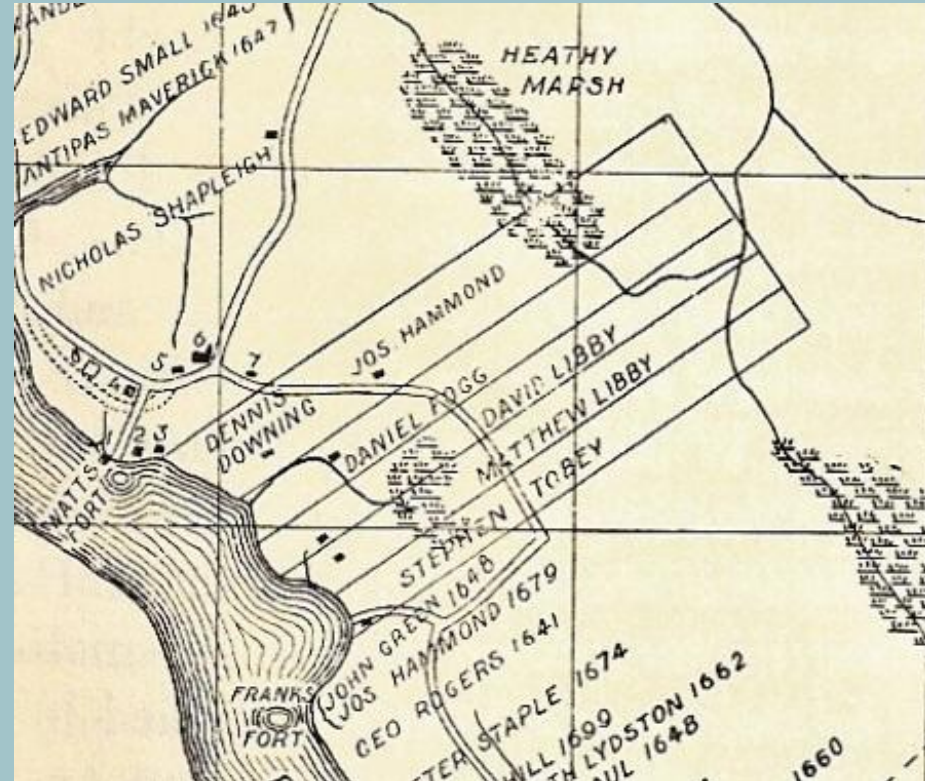




# Squatters

Unimproved land invited squatters

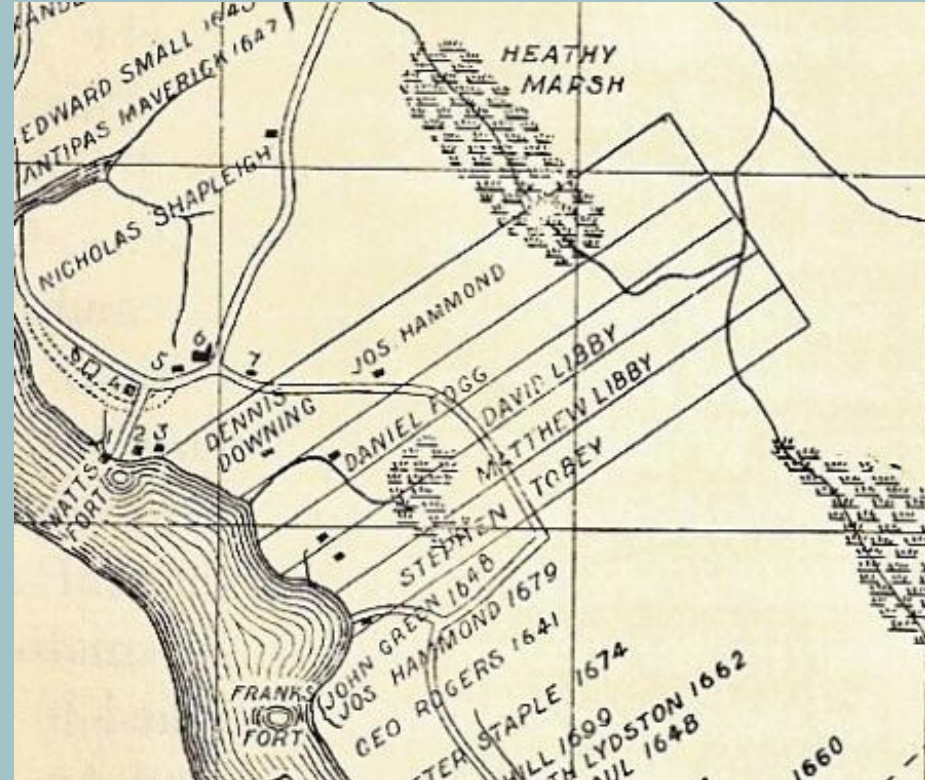
- Dennis Downing lived on about 30 acres of land where Frost Tufts Park is today. His son Joshua inherited this land.
- Stackpole says all of the grantees of the 1699 purchase except Joseph Hammond were already living on this land, maybe Tobey who conducted shipbuilding at Mast Cove.



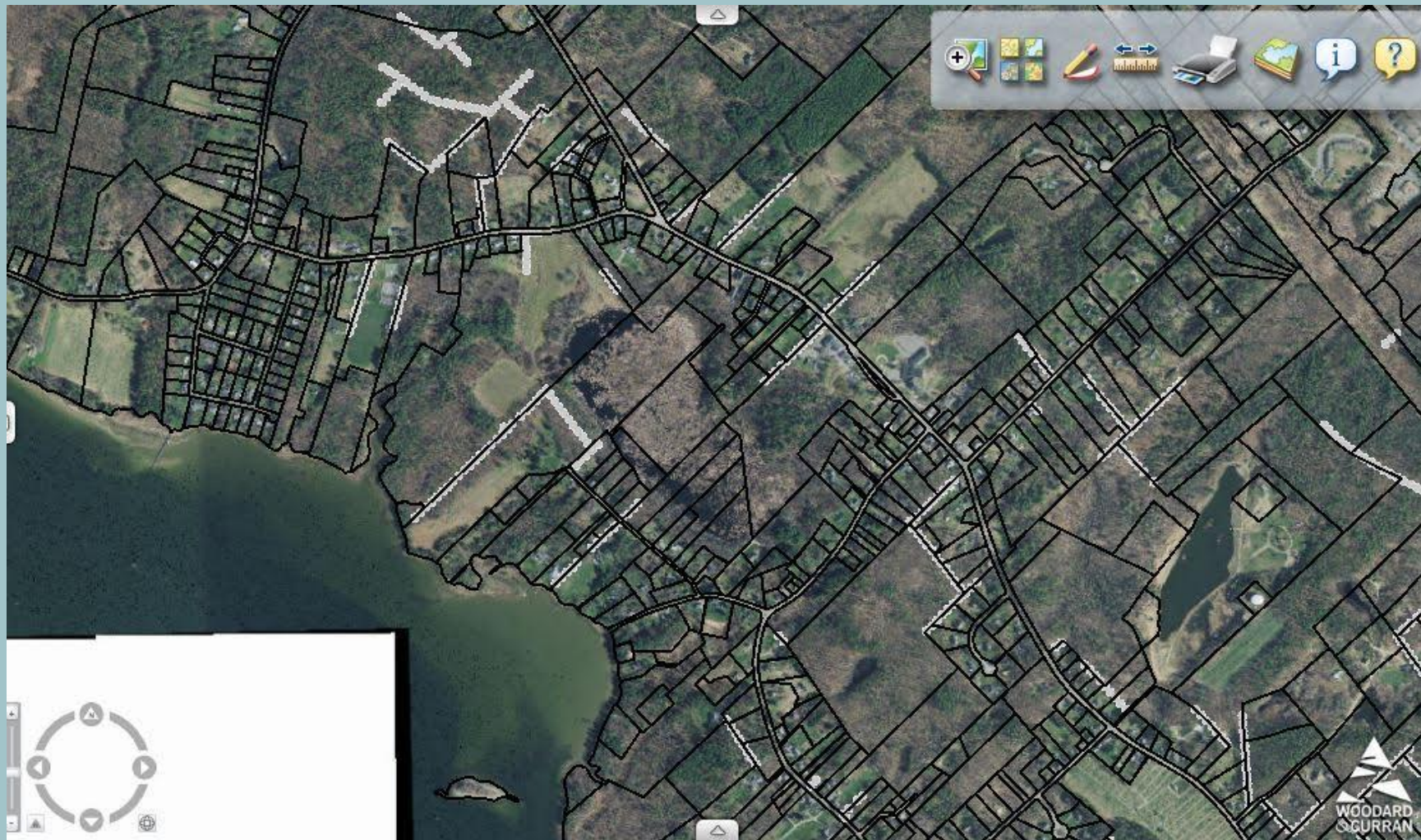
# Hammond & Company 1699

York Deeds Book 6 Folio 88

- Dec. 18, 1699
- 300 pounds
- Joseph Hammond, Daniel Fogg, Matthew Libby, David Libby, Stephen Tobey.
- Joseph Hammond paid 100 pounds so received wider lot.
- Joshua Downing already lived on 30 acres along the river.
- Hammond 88 poles, rest 38 poles



















Libbey Lane used as an access road between Matthew and David Libbey's lots.







**Property Information**

Old Libby Lane

Wiltshire Road

State Road

Dixon Road

Beech Road

Tobey to Jacob Smith 1701  
Smith to John Cotton 1701

0 150 300ft

Lot numbers visible: 20-13, 20-14, 20-15, 20-16, 20-17, 20-18, 20-19, 20-20, 20-21, 20-22, 20-23, 20-24, 20-25, 20-26, 20-27, 20-28, 20-29, 20-30, 20-31, 20-32, 20-33, 20-34, 20-35, 20-36, 20-37, 20-38, 20-39, 20-40, 20-41, 20-42, 20-43, 20-44, 20-45, 20-46, 20-47, 20-48, 20-49, 20-50, 20-51, 20-52, 20-53, 20-54, 20-55, 20-56, 20-57, 20-58, 20-59, 20-60, 20-61, 20-62, 20-63, 20-64, 20-65, 20-66, 20-67, 20-68, 20-69, 20-70, 20-71, 20-72, 20-73, 20-74, 20-75, 20-76, 20-77, 20-78, 20-79, 20-80, 20-81, 20-82, 20-83, 20-84, 20-85, 20-86, 20-87, 20-88, 20-89, 20-90, 20-91, 20-92, 20-93, 20-94, 20-95, 20-96, 20-97, 20-98, 20-99, 20-100, 20-101, 20-102, 20-103, 20-104, 20-105, 20-106, 20-107, 20-108, 20-109, 20-110, 20-111, 20-112, 20-113, 20-114, 20-115, 20-116, 20-117, 20-118, 20-119, 20-120, 20-121, 20-122, 20-123, 20-124, 20-125, 20-126, 20-127, 20-128, 20-129, 20-130, 20-131, 20-132, 20-133, 20-134, 20-135, 20-136, 20-137, 20-138, 20-139, 20-140, 20-141, 20-142, 20-143, 20-144, 20-145, 20-146, 20-147, 20-148, 20-149, 20-150, 20-151, 20-152, 20-153, 20-154, 20-155, 20-156, 20-157, 20-158, 20-159, 20-160, 20-161, 20-162, 20-163, 20-164, 20-165, 20-166, 20-167, 20-168, 20-169, 20-170, 20-171, 20-172, 20-173, 20-174, 20-175, 20-176, 20-177, 20-178, 20-179, 20-180, 20-181, 20-182, 20-183, 20-184, 20-185, 20-186, 20-187, 20-188, 20-189, 20-190, 20-191, 20-192, 20-193, 20-194, 20-195, 20-196, 20-197, 20-198, 20-199, 20-200, 20-201, 20-202, 20-203, 20-204, 20-205, 20-206, 20-207, 20-208, 20-209, 20-210, 20-211, 20-212, 20-213, 20-214, 20-215, 20-216, 20-217, 20-218, 20-219, 20-220, 20-221, 20-222, 20-223, 20-224, 20-225, 20-226, 20-227, 20-228, 20-229, 20-230, 20-231, 20-232, 20-233, 20-234, 20-235, 20-236, 20-237, 20-238, 20-239, 20-240, 20-241, 20-242, 20-243, 20-244, 20-245, 20-246, 20-247, 20-248, 20-249, 20-250, 20-251, 20-252, 20-253, 20-254, 20-255, 20-256, 20-257, 20-258, 20-259, 20-260, 20-261, 20-262, 20-263, 20-264, 20-265, 20-266, 20-267, 20-268, 20-269, 20-270, 20-271, 20-272, 20-273, 20-274, 20-275, 20-276, 20-277, 20-278, 20-279, 20-280, 20-281, 20-282, 20-283, 20-284, 20-285, 20-286, 20-287, 20-288, 20-289, 20-290, 20-291, 20-292, 20-293, 20-294, 20-295, 20-296, 20-297, 20-298, 20-299, 20-300, 20-301, 20-302, 20-303, 20-304, 20-305, 20-306, 20-307, 20-308, 20-309, 20-310, 20-311, 20-312, 20-313, 20-314, 20-315, 20-316, 20-317, 20-318, 20-319, 20-320, 20-321, 20-322, 20-323, 20-324, 20-325, 20-326, 20-327, 20-328, 20-329, 20-330, 20-331, 20-332, 20-333, 20-334, 20-335, 20-336, 20-337, 20-338, 20-339, 20-340, 20-341, 20-342, 20-343, 20-344, 20-345, 20-346, 20-347, 20-348, 20-349, 20-350, 20-351, 20-352, 20-353, 20-354, 20-355, 20-356, 20-357, 20-358, 20-359, 20-360, 20-361, 20-362, 20-363, 20-364, 20-365, 20-366, 20-367, 20-368, 20-369, 20-370, 20-371, 20-372, 20-373, 20-374, 20-375, 20-376, 20-377, 20-378, 20-379, 20-380, 20-381, 20-382, 20-383, 20-384, 20-385, 20-386, 20-387, 20-388, 20-389, 20-390, 20-391, 20-392, 20-393, 20-394, 20-395, 20-396, 20-397, 20-398, 20-399, 20-400, 20-401, 20-402, 20-403, 20-404, 20-405, 20-406, 20-407, 20-408, 20-409, 20-410, 20-411, 20-412, 20-413, 20-414, 20-415, 20-416, 20-417, 20-418, 20-419, 20-420, 20-421, 20-422, 20-423, 20-424, 20-425, 20-426, 20-427, 20-428, 20-429, 20-430, 20-431, 20-432, 20-433, 20-434, 20-435, 20-436, 20-437, 20-438, 20-439, 20-440, 20-441, 20-442, 20-443, 20-444, 20-445, 20-446, 20-447, 20-448, 20-449, 20-450, 20-451, 20-452, 20-453, 20-454, 20-455, 20-456, 20-457, 20-458, 20-459, 20-460, 20-461, 20-462, 20-463, 20-464, 20-465, 20-466, 20-467, 20-468, 20-469, 20-470, 20-471, 20-472, 20-473, 20-474, 20-475, 20-476, 20-477, 20-478, 20-479, 20-480, 20-481, 20-482, 20-483, 20-484, 20-485, 20-486, 20-487, 20-488, 20-489, 20-490, 20-491, 20-492, 20-493, 20-494, 20-495, 20-496, 20-497, 20-498, 20-499, 20-500, 20-501, 20-502, 20-503, 20-504, 20-505, 20-506, 20-507, 20-50

Tobey divides this portion of his parcel almost immediately. David Libbey divides a 12 Rod parcel adjacent to this parcel also to John Cotten in 1702.





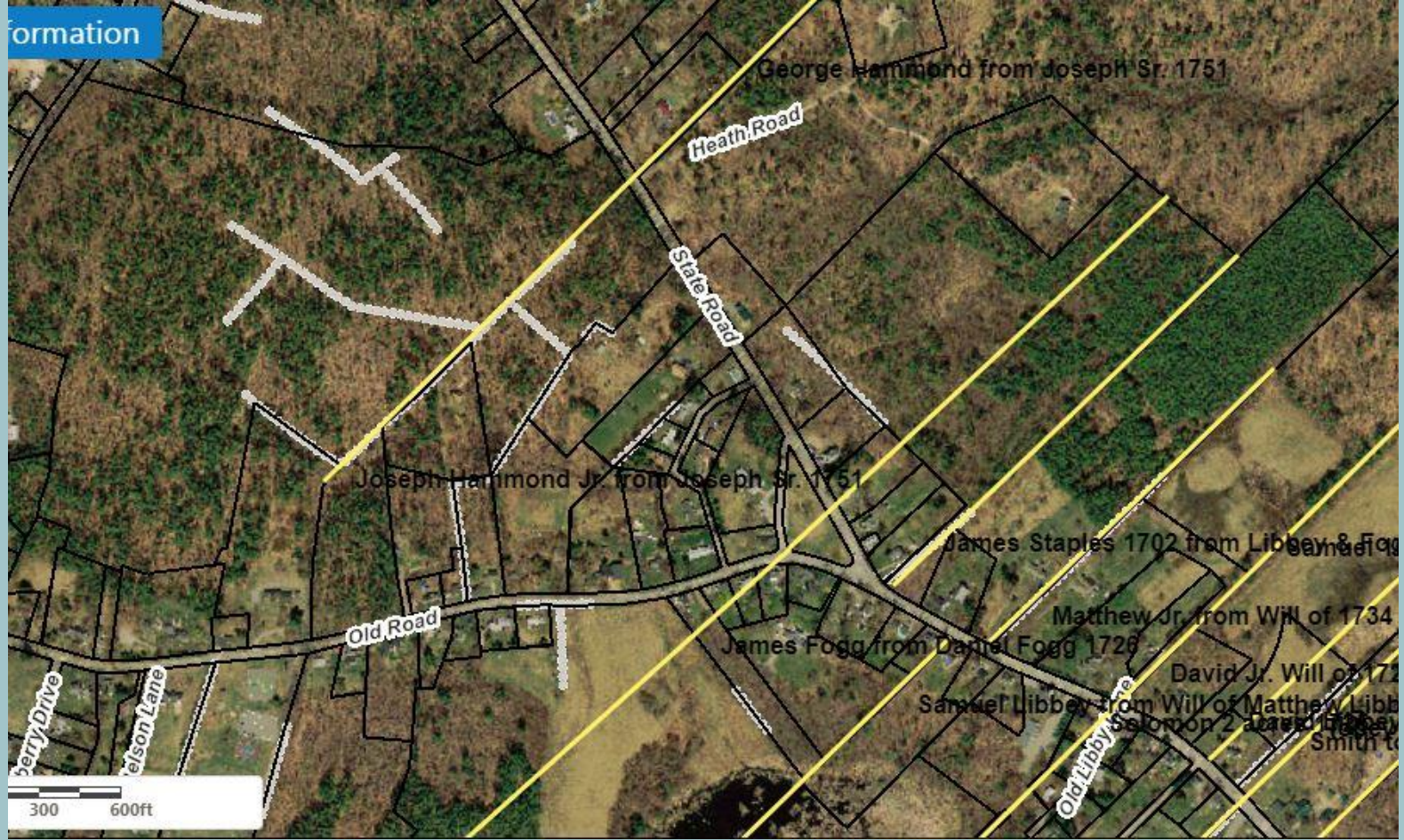
David Libbey's will of 1725 divides his parcel among his sons, David Jr., Samuel, Solomon, and Ephraim.





Matthew Libbey's 1740 will divides his parcel between sons Matthew Jr. and Samuel.





Joseph Hammond's will formally divided his parcel 1751 between sons Joseph, and George.





Close to the boundary of Joseph Hammond's parcel. Joshua Downing owned land to the right.





Dr. Willis Homestead - bought by John Fogg from a Mr. Dixon about 1775. Brick bears year 1727.





William Fogg House (1821) and William Fogg Library (1907) on Fogg land.





Joseph Kennard House (1850)





Site of the Eliot Academy built 1839 burned 1875. Land donated by Joseph Fogg.





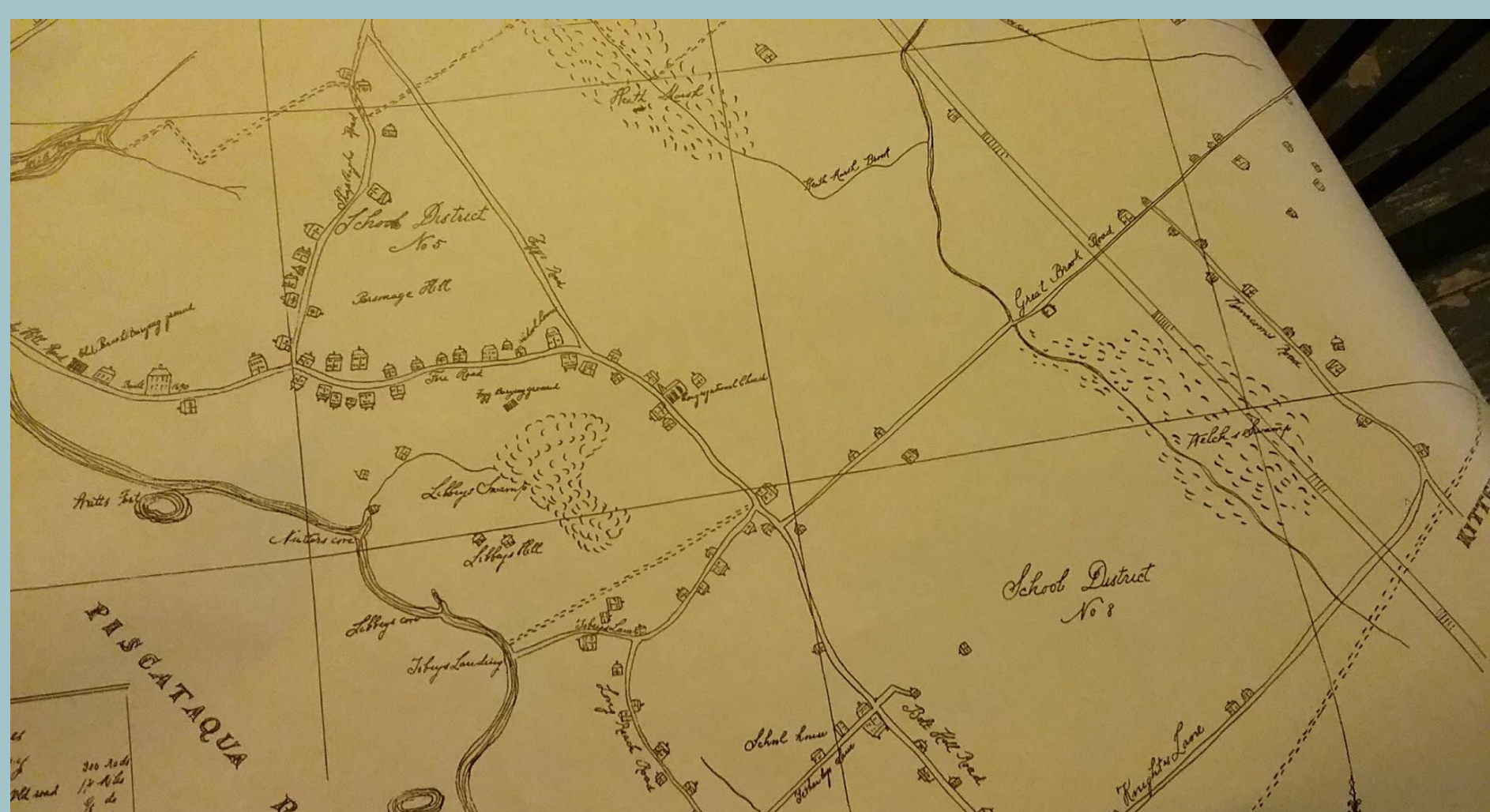
Stonewall by town office marks original boundary between David Libbey & Stephen Tobey





George A. Hammond house was moved here from parcel off Bradstreet Lane in 1852. Originally part of Stephen Tobey's land, parcel sold to Jacob Smith, then John Cotton 1701.









Stephen Tobey parcel ends at the driveway into the Elementary School.





